



3744 Scheuneman Road White Bear Lake, MN 55110

---

651-777-7774 800-331-0705 651-426-3952 fax [www.trikeshop.com](http://www.trikeshop.com)

## **ST-18 INSTALLATION INSTRUCTIONS**

### **DISSASSEMBLY AND PREPARATION**

---

Put bike on centerstand  
Secure sidestand forward with tie-strap.  
Ensure all of the bike's lights operate and turn shock preload to zero.

Remove seat and sidecovers.  
Remove rear center panel between saddlebags.

Remove saddlebag latch cover within saddlebags.  
Remove cable attached to latch.

Unplug red, blue, and brown connectors under rear of tour pack.  
Unplug remaining connectors in-front-of tourpack.  
Remove tourpack with frame.  
*Note: Save the four bolts and two nuts.*

Remove taillights and wiring from saddlebags.  
*Note: Save taillight mounting hardware.*

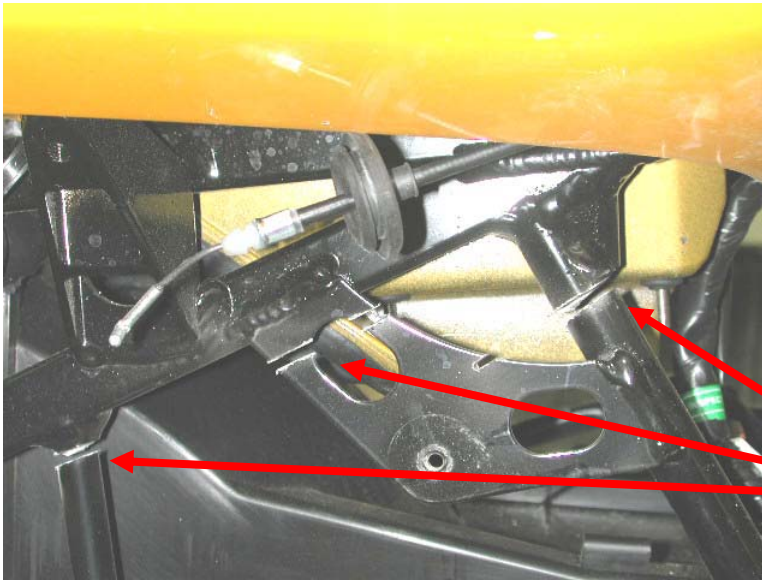
Remove saddlebags.

Re-install the two front screws that hold the latch assembly to saddlebag.

Remove passenger peg trim.  
*Note: Save hardware.*

Remove crash bars.  
*Note: Save bolts.*

Remove lower saddlebag mounting bolt and muffler bracket bolt and discard.



Cut points

Cut lower saddlebag mounts and remove.

Remove mufflers.

*Note: Save front rubber grommets.*

Remove rear wheel.

Temporarily remove fuel lines to access top shock bolt.  
Unbolt front line.

---

**Warning: Gas tank capacity should be at ½ tank or less.**

---

---

**Warning: Fuel line under pressure.**

---

---

**Warning: Ensure pre-load adjustment is set to zero.**

---

---

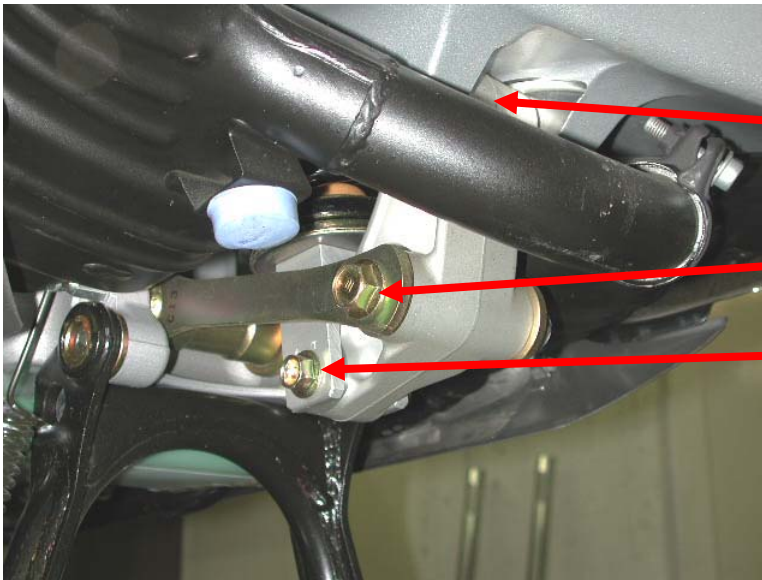
**Warning: DO NOT! remove the hydraulic line going to preload shock.**

---

Remove top shock nut with 17mm socket.  
Push out bolt.

Route fuel line in front of shock pre-load hose and re-install fuel line.

Remove all three brake line clamps from swingarm.



Upper pivot bolt (hidden)

Gold colored bracket and pivot bolt

Lower shock bolt

Remove bolt from pivot arm's gold colored bracket.

*Note: You may have to remove centerstand's rubber stop to remove bolt.*

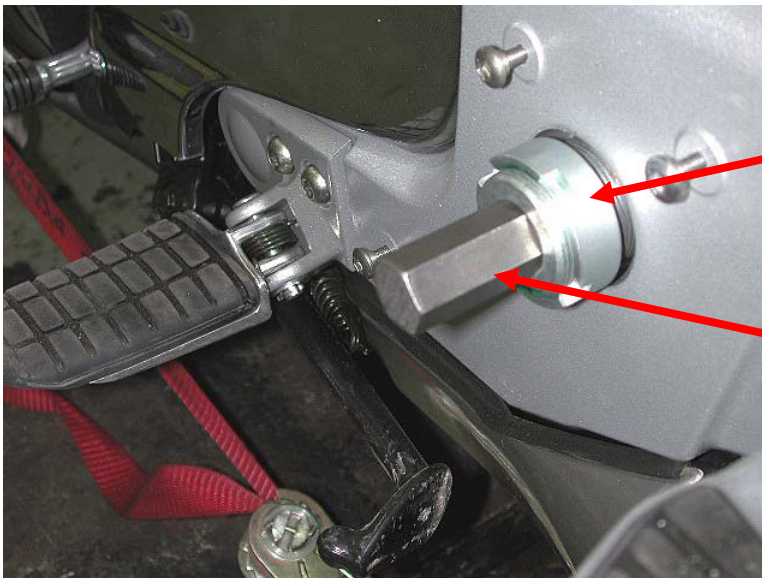
*Note: Save bolt and nut.*

Remove lower shock bolt and discard.

*Note: Need to lift swingarm to access pivot arm.*

Remove remaining bolt from shock aluminum pivot arm – remove pivot arm.

**Warning: DO NOT! remove the hydraulic line going to preload shock.**



Swingarm bolt almost completely removed.

Supplied 19mm tool

Remove swingarm pivot-bolt cover (on frame).

Remove swingarm pivot bolts using 19mm tool provided.

Re-install pivot bolt cover

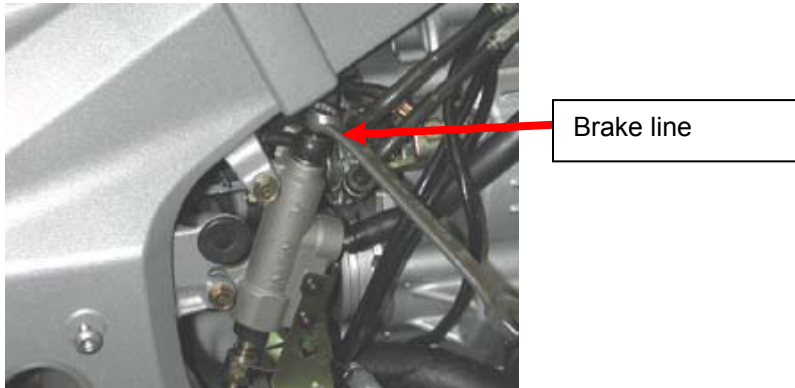
Remove swingarm and shock.

*Note: Set shock outside the bike's frame – right side – with hose connected.*

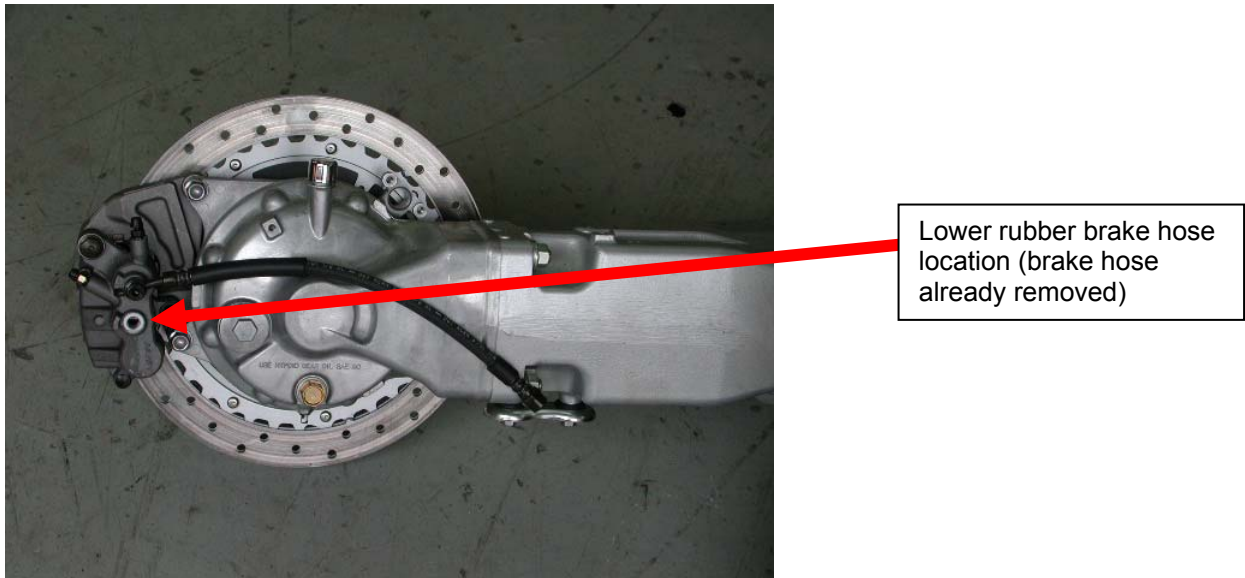
**Warning: Ensure pre-load adjustment is set to zero.**

Loosen set screw on shock ram.  
Clamp onto shock shaft with locking pliers and rotate u-shaped end – may require sharp blow to break thread locking compound.  
Rotate u-shaped end until separated from shaft.  
*Note: There is no spring pre-load pressure.*

Remove and discard shock, shock spring, rubber stop, spring retainer, nut, large washer, and u-shaped bracket.  
*Note: Save ram assembly and circlip.*



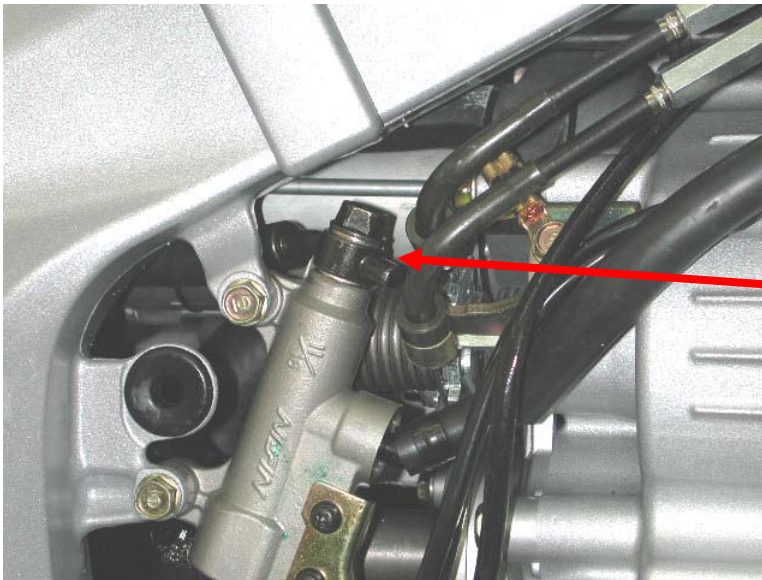
Remove brake line from rear master cylinder.  
Route brake line under frame rail and over crossbar.  
Plug banjo fitting with banjo bolt and supplied banjo bolt cap.  
Secure hose to crossbar.



Remove upper and lower rubber brake hoses and steel brake lines from rear brake caliper.  
Remove steel line from lower rubber brake hose and insert adapter into end of rubber brake hose.  
Set hose aside for installation later.



*(Picture for illustration purposes only – picture shows brake hoses plugged with adapter and plug. During installation, these lines will remain connected to bike)*  
Plug rubber brake hoses remaining on bike (where steel lines previously connected) with supplied brake line adapter and plug.



Brake hose installed on master cylinder.

Install provided 8" steel line into adapter fitting on brake hose

Take brake hose (previously set aside) with adapter and slightly bend the hose's banjo end to fit between the frame rail and top of the rear master cylinder (same location where line was previously removed and capped).  
Install banjo bolt and tighten.

Install 8" steel brake line (provided) into adapter fitting on brake hose.  
*Note: The 8" steel line will eventually connect bike's brake system to the trike conversion.*



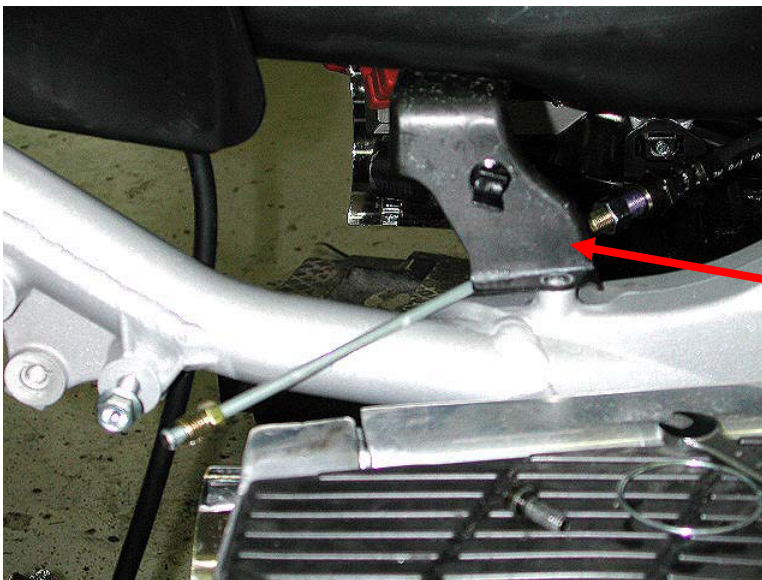
Brake lines  
secured  
away on  
crossbar.

Secure all lines out of way onto crossbar.

#### REAR BRAKE PEDAL ADJUSTMENT

---

Remove right side driver's footpeg.  
Remove bolt from foot brake lever.  
Remove brake lever and re-install one spline higher (to get brake pedal higher).  
Re-install bolt and footpeg.



Gas tank  
bracket – right  
side of bike.

Remove screw on gas tank bracket.  
Slide hydraulic line from ram underneath gas tank bracket (allows hydraulic ram to reach rear of bike).  
Re-install screw into gas tank bracket.

#### CHASSIS INSTALLATION

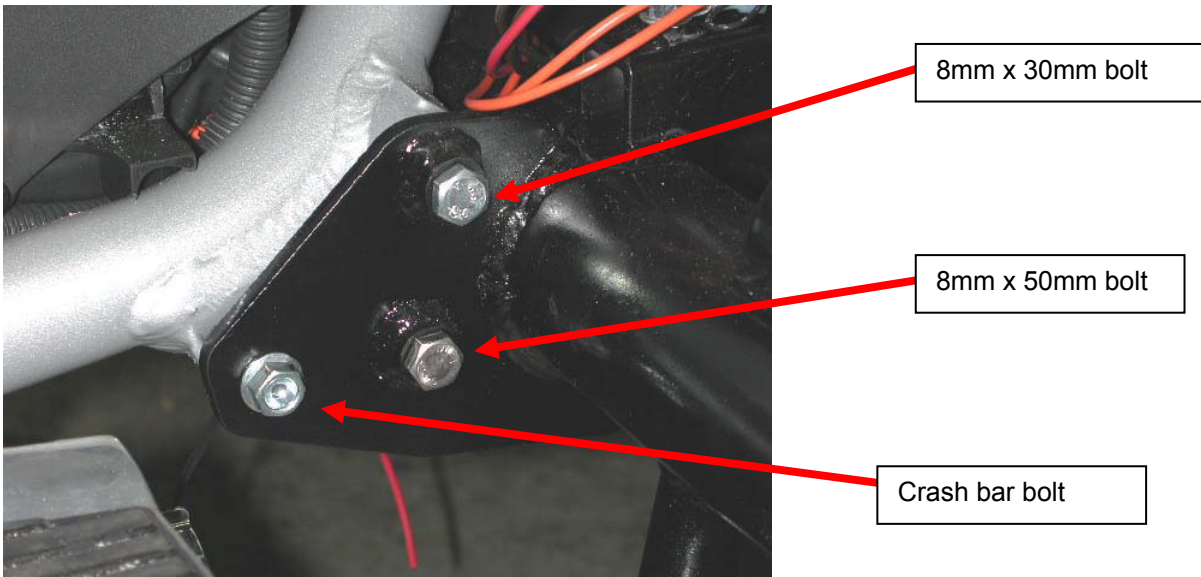
---



1. Roll trike chassis to rear of bike.
2. Remove upper bolt from machined parts on suspension system.
3. Install circlip onto machined sleeve.
4. Slide machined sleeve into hydraulic ram.
5. Insert ram onto lower machined sleeve.
6. Bolt the assembled preload mechanism back onto the chassis.
7. Tighten setscrew on ram.

Roll trike chassis to rear of bike.  
Assemble hydraulic ram onto machined aluminum parts as described in box above.

Note: Use floorjack to adjust chassis height until rear mount holes line-up.



Reinsert crash bar bolt into front frame hole – install bolts on both sides but do not tighten.

Align and install pivot arm bolt through gold-colored shock bracket and forward trike chassis mount support.

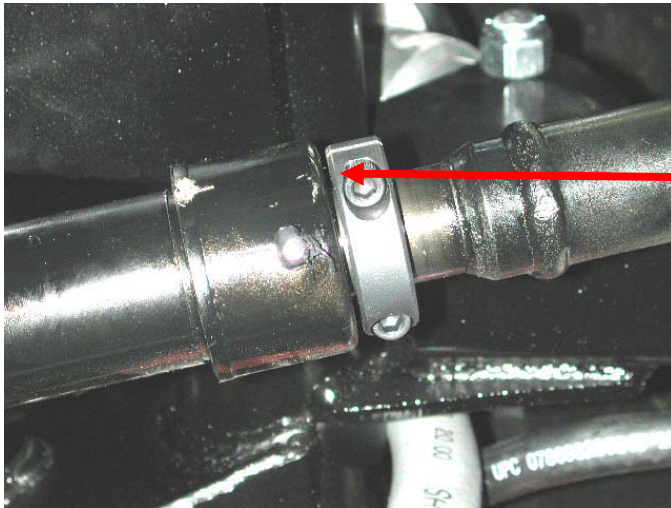
Install 8x30mm and 8x50mm bolts through frame to crash bar area on bike's frame.

Note: 8x30mm bolt goes on top.

Note: Tighten all chassis mounting hardware.

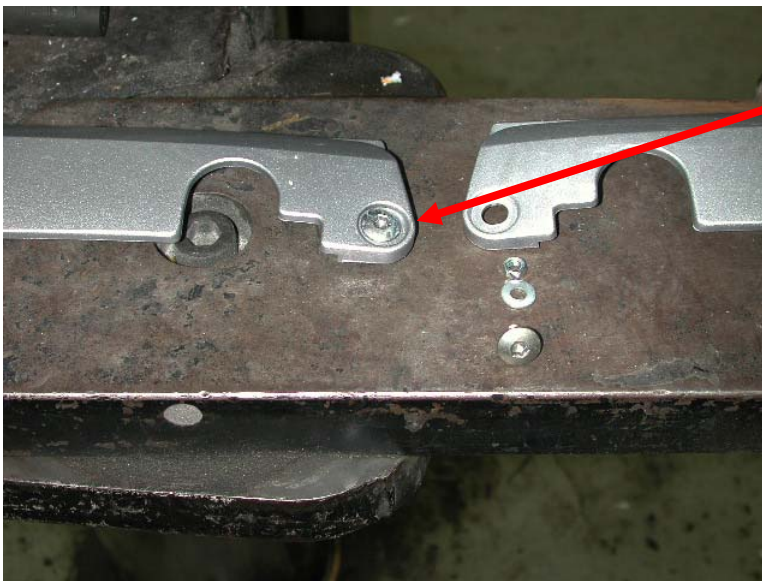
Lower floorjack and remove.

Connect 8" steel brake line from bike into trike chassis brake line fitting.  
Bleed brakes, refilling reservoir as necessary.



1/8" gap

Install driveshaft by sliding the front spline onto the engine's output shaft.  
Slide rear u-joint into place on differential yoke.  
Install strap kit onto yoke.  
Install locking collar onto driveshaft. Grease zerk fitting on driveshaft's slip yoke.  
*Note: Before tightening locking collar, push shaft forward against the engine. Set collar 1/8" forward of driveshaft's rear slip yoke.*



Bolt and washer are used only as a plug for the hole – the trim piece no longer uses the rear hole as a mounting point.

Install bolt in rear hole of passenger peg trim with supplied 5mm nut and #10 washer.  
Install passenger peg trim onto bike.



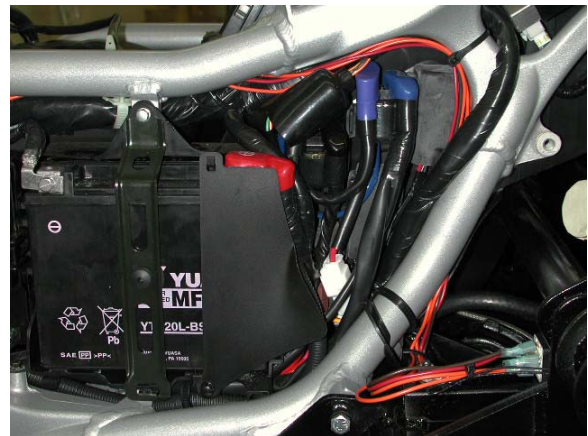
Exhaust shield tabs  
and grommets

Insert exhaust shield grommets onto exhaust shield tabs.  
Install provided exhaust shields into original exhaust shields.

Using 10-24 x 5/8" chrome buttonhead bolts and 10-24 nylocs, install exhaust shields onto chassis support bracket.

Warning: Make sure chassis support bracket is on outside of shield.

SKIP THE FOLLOWING IF FUEL TANK OPTION WAS NOT CHOSEN





Remove bolt holding headlight adjuster panel in place and pull off to side.

Remove trim next to headlight adjuster.

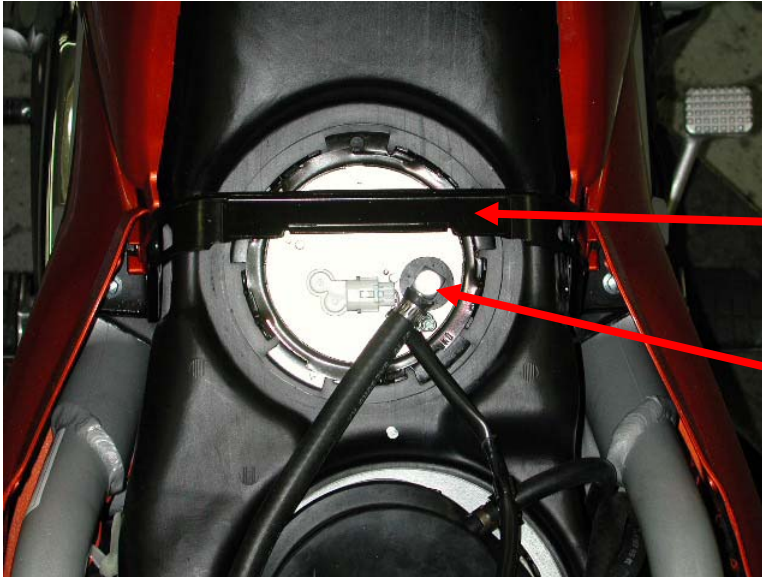
Drill  $\frac{1}{2}$ " hole for toggle switch and two  $\frac{1}{4}$ " holes for LED lights – see picture for location.

Route wires from relay next to frame as shown.

Route black wire from fuse block to lights as shown in wiring diagram provided.

Connect wires to light and switch as per diagram.

Re-install headlight adjuster panel and trim.



Front seat  
crossbar.

90° fuel inlet fitting.  
Locate just to the right of  
electrical connection.

Remove front seat support crossbar going over fuel sending unit.

Warning: Ensure fuel tank capacity is less than ½.

Remove fuel sending unit by rotating locking ring counter-clockwise.

Lift out fuel sending unit and protect gas tank from any falling debris or foreign objects.

Drill ½" hole as shown in picture. Clean any debris and metal shavings from fuel sending unit.

Insert rubber grommet into hole and insert 90° fuel inlet fitting into rubber grommet.

Install sender in tank.

Using a screw clamp, connect fuel line from auxiliary fuel pump onto 90° fuel inlet fitting. Tighten screw clamp.

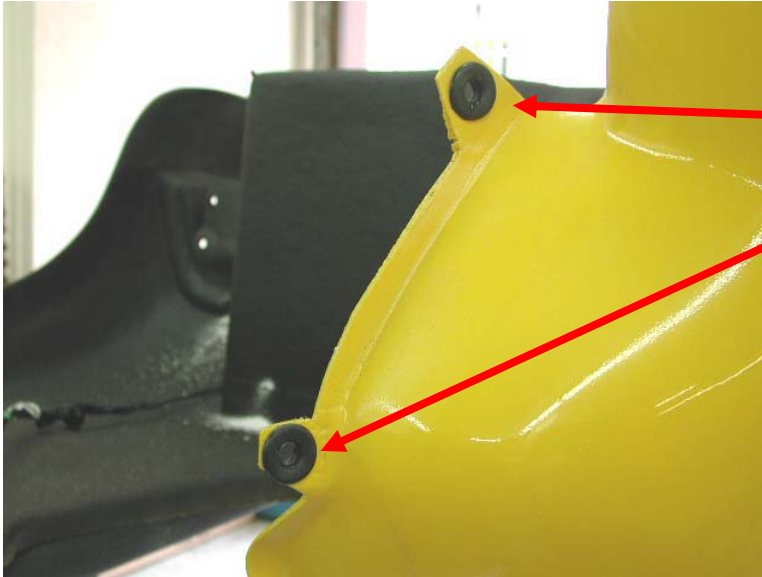
Route fuel line.

Connect other end of hose to fuel pump on chassis.

## BODY INSTALLATION

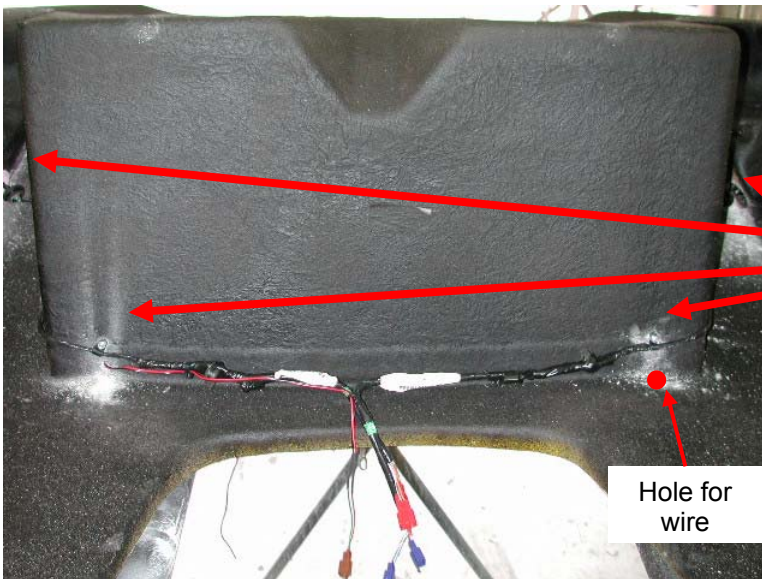
Turn conversion body upside down on a clean, soft surface.

Warning: Make sure to protect paint finish.



Grommets

Insert sidepanel and top body mount grommets into body.  
*Note: Some grinding of hole may be required to properly fit grommets.*



Total of four 3/8" wire clamps  
 2 - on back side of trunk.  
 1 - on each side of trunk.  
 Use 10-24 screws and nylocs to secure.



Hole for wire

Install taillights (with wires) into body.  
 Install taillight wires from saddlebag onto body attaching with clamps as shown.

Install license plate light on to the trunk door. Use foam gasket as a template to drill holes.  
 Drill hole into back of trunk. See picture above for hole to route through the wire.  
 Use the brown plug from the original license plate light to provide power to the new license plate light.  
 Use the wire provided to connect the wire from the license plate light to the brown plug wire.

Lift body onto frame.

*Note: Set rear of body onto chassis 'H' frame. Using the anti-sway bar as a brace against the trunk, carefully and powerfully pull front of body to clear the frame.*

Set front body mount onto top of frame's front body mounting plate.  
Rest rear of body onto trailer hitch 'H' frame.

Grind corner of side panels to fit (see picture). Install sidepanel.



Clamp front body mount to front frame mount.  
Install sidepanel and check fitment.  
Check spacing between tires and body – make sure even left side and right side – align if necessary  
Once satisfied, drill holes in front body mounts and install 5/16" x 1" bolts, nuts and washers.

Double check body to tire relationship.

Drill two most rearward body mounting holes through 'H' frame and into fiberglass trunk bottom.

Install 5/16" x 1-1/4" bolts with washers through holes in trunk and tighten.

Drill remaining two rear body mounting holes – shim with washers if necessary – install and tighten 5/16" x 1-1/4" bolts with washers.

Insert deck fill into hole in body. Mark three holes – drill holes. Attach deck fill with three 8-32 screws and nuts.

Install 8' of filler hose to inlet on auxiliary gas tank and other side of hose to deck fill. Make sure the #24 hose clamps are on the filler hose before installing on tank and deck fill.

Tighten hose clamps.

Ground deck fill to stud on chassis frame.

Install left and right exhaust extension pipes (pipes are stamped with an R and L) with provided clamps.

Install muffler onto extensions.

Secure muffler to chassis support brackets with Honda crash bar bolts.

Tighten muffler clamps.

Install four pack and two top four pack bolts.

Roll box forward and plug-in rear wiring.

Set box down and plug-in front wiring.

Finish attaching box.

Install trim on upper flange of body.

Plug-in wiring.

Torque lugnuts to 65lb/ft.

A break-in procedure is necessary for optimum brake function. Using the rear brakes only, perform several hard stops. Utilize cooling down periods to ensure pads do not overheat. Pads are seated once proper brake function is achieved.